

Appendix A.13.7

Plates 13.1 to 13.112

A.13.7 Plate 13.1 to 13.112

Document Verification

Project title	N6 Galway City Ring Road		
Document title	Appendix A.13.7 Detailed Field Inspection Results Plates		
Job number	233985-00		
Document ref	GCOB-4.04.03_30.10.9.13_A.13.7		
File reference	Appendix A.13.7		

Revision	Date	Filename	Detailed Field Inspection Results Plates	
Issue 1	26 July 2018	Description	Issued for 2018 EIAR	
		Prepared by	Checked by	Approved by
		Name	IAC	Mary Hurley
		Signature	Faith Bailey	Eileen McCarthy

Issue 2	28 March 2025	Filename	Detailed Field Inspection Results Plates	
		Description	Issued for 2025 RFI Response	
		Prepared by	Checked by	Approved by
		Name	IAC	Mary Hurley
		Signature	Faith Bailey	Eileen McCarthy

		Filename		
		Description		
		Prepared by	Checked by	Approved by
		Name		
		Signature		

		Filename		
		Description		
		Prepared by	Checked by	Approved by
		Name		
		Signature		

Issue Document Verification with Document ☒

Detailed field Inspection Plates

The Plates included below are relate to the results detailed in Appendix A.13.6 in Volume 4 of this updated EIAR.



Plate 13.1 - Sea Road (TB 1), facing southwest



Plate 13.2 - Overgrown fields at southern extent of proposed N6 GCRR, facing northwest



Plate 13.3 - Relict field system, facing northeast



Plate 13.4 - AH 1/CH 4, traditional dry stone wall enclosure facing northeast



Plate 13.5 – Tradition dry stone granite walling with enclosure entrance, facing west



Plate 13.6 – Tradition dry stone walled laneway adjacent to AH 1/CH 4, facing northeast



Plate 13.7 – Spring or well, facing south



Plate 13.8 - TB 2/AAP 1, facing southwest along watercourse



Plate 13.9 - Stream in 7860, facing northeast, facing east



Plate 13.10 - TB 3, facing northwest



Plate 13.11 - TB 4, facing southeast



Plate 13.12 – CH 7, facing west



Plate 13.13 – Traditional dry stone walled laneway in 7757, facing east



Plate 13.14 - Location of CH 10, facing east



Plate 13.15 - TB 5, facing west



Plate 13.16 – CH 13, facing east



Plate 13.17 – CH 11, facing north



Plate 13.18 - TB 6, facing southeast



Plate 13.19 - Mound immediately west of stream at AAP 2



Plate 13.20 - TB 7, facing northeast



Plate 13.21 - TB 7, traditional dry stone wall, facing southeast



Plate 13.22 – CH 18, facing northeast



Plate 13.23 - TB 8, levelled boundary, facing north



Plate 13.24 - TB 9, stone wall and hedgerow, facing west



Plate 13.25 - TB 10 and AAP 3 (including traditional dry stone wall), facing north



Plate 13.26 - Machine straightened watercourse feeding Bearna Stream (AAP 3), facing southeast



Plate 13.27 - 'Lazy Beds' facing south in 7067



Plate 13.28 – CH 20, facing west



Plate 13.29 – CH 22, facing northeast



Plate 13.30 – CH 21, facing southwest



Plate 13.31 – CH 23 immediately west of proposed N6 GCRR, facing north



Plate 13.32 - TB 11, traditional dry stone walled laneway, facing northeast



Plate 13.33 - TB 11 showing construction of traditional dry stone granite wall



Plate 13.34 - AAP 4, facing northeast



Plate 13.35 - Disturbed area and straightened watercourse, facing east



Plate 13.36 - Unfinished dry stone wall, facing northeast



Plate 13.37 - View north towards TB 12



Plate 13.38 – CH 25, stone built shed, facing east



Plate 13.39 – CH 26, Ruined vernacular dwelling, facing east



Plate 13.40 – CH 27, vernacular dwelling, facing north



Plate 13.41 - TB 13, facing east



Plate 13.42 - TB 14, facing north



Plate 13.43 - BH 2, facing southeast



Plate 13.44 - Hollow trackway lined with traditional dry stone walls (CH 71), facing southwest



Plate 13.45 - View north towards CH 30



Plate 13.46 - CH 32, facing northeast



Plate 13.47 - TB 15 (including traditional dry stone wall), facing southwest



Plate 13.48 - Location of AH 1 and AAP 5, facing northeast



Plate 13.49 - AH 1, purported location of Bullaun Stone, facing south



Plate 13.50 – AAP 5, facing north



Plate 13.51 - Overgrown walled laneway, associated with CH 33, facing east



Plate 13.52 – CH 35, Renovated farmhouse and barn, facing northeast



Plate 13.53 - Area of standing water to the east of Letteragh Road, facing southeast



Plate 13.54 - TB 17 (including traditional dry stone wall), facing northwest



Plate 13.55 - Watercourse traversing area of bog (AAP 7), facing southwest



Plate 13.56 - TB 18, facing east



Plate 13.57 - TB 19, facing southeast



Plate 13.58 – CH 37, dry stone constructed clearance cairn, facing east



Plate 13.59 – CH 37, dry stone constructed clearance cairn, facing southeast



Plate 13.60 – Undulating marginal land within AAP 8, facing northeast



Plate 13.61 - TB 21 (including traditional dry stone wall), facing west



Plate 13.62 – CH 39, facing southwest



Plate 13.63 - BH 4, facing west



Plate 13.64 - CH 40, facing south



Plate 13.65 - CH 42, facing north



Plate 13.66 - CH 41, facing south



Plate 13.67 - AH 34, facing north



Plate 13.68 - AH 14, facing north



Plate 13.69 - AH 15/BH 9, facing east



Plate 13.70 – River Corrib crossing (AAP 8), facing northeast



Plate 13.71 - Inlet from the River Corrib (CH 45), facing south



Plate 13.72 - AH 16/BH 10, facing northeast



Plate 13.73 – CH 46, facing south



Plate 13.74 – Traditional dry stone walled trackway (CH 72) bounding DL 8, facing northwest



Plate 13.75 – CH 49 in 7104, facing west



Plate 13.76 - Modern clearance cairn of stones, facing south



Plate 13.77 - View east towards CH 50



Plate 13.78 - TB 23, facing southwest



Plate 13.79 - View east across the quarry



Plate 13.80 - TB 22 in 7603, facing west



Plate 13.81 - View northwest across AAP 10 towards AH 21



Plate 13.82 - BH 12, facing north



Plate 13.83 - Bottom of 'Pollinapreaghaun' AH 24/AAP 11, facing southeast



Plate 13.84 – CH 53, facing southwest



Plate 13.85 - TB 26, facing northeast



Plate 13.86 - AH 26, facing north



Plate 13.87 - TB 28, facing southwest



Plate 13.88 - TB 29 (including traditional dry stone wall), facing northeast



Plate 13.89 - AH 27, facing southwest



Plate 13.90 - AH 29/BH 17, facing west



Plate 13.91 – CH 57, facing northeast



Plate 13.92 – CH 58, facing north



Plate 13.93 - TB 41 (including traditional dry stone wall), facing north



Plate 13.94 - Relict field boundaries in 7553



Plate 13.95 - Raised rectangular platform (CH 38), facing west



Plate 13.96 - Grassed over field boundary (CH 38) facing northwest

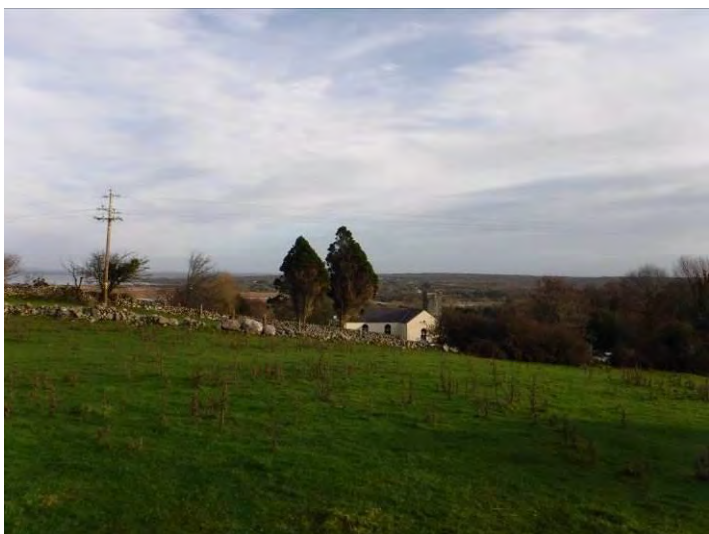


Plate 13.97 - View from CH 38, facing northeast



Plate 13.98 - BH 7, facing southwest



Plate 13.99 - BH 5, facing northwest



Plate 13.100 - Outbuildings to rear of BH 5, facing northwest



Plate 13.101 - Section of enclosing wall at BH 5, facing north



Plate 13.102 - Possible mass rock (CH 69), facing southeast



Plate 13.103 – Interior of walled garden, facing east



Plate 13.104 – Route of proposed pipeline, facing northeast



Plate 13.105 – The remains of 'Loughaunnafraska' (AAP 12), facing south-southwest



Plate 13.106 – Remains of railway bed (CH 68), facing southeast



Plate 13.107 – Railway culvert (CH 70), facing north-northeast



Plate 13.108 – CH 63, facing east



Plate 13.109 - TB 20, facing west-northwest



Plate 13.110 - Path of the southern section of the proposed N6 GCRR, facing north



Plate 13.111 – Site of AH 42, facing west



Plate 13.112 – Detail of AH 42, facing north (Martin Jones, TII Archaeologist)